

Tarphius palmensis sp. n., a new species of the genus *Tarphius* Erichson from La Palma, Canary Islands (Col., Colydiidae)

G. GILLERFORS

Maskrostigen 23, S-43200 Varberg, Sweden

(Aceptado el 23 de Diciembre de 1987)

GILLERFORS, G., 1990. *Tarphius palmensis* sp. n., a new species of the genus *Tarphius* Erichson from La Palma, Canary Islands (Col., Colydiidae). *Vieraea* 18:149-151

ABSTRACT: *Tarphius palmensis* sp. n. is described from La Palma, Canary Islands. Diagnostic and bionomical data are given. A key to the four known species of *Tarphius* on La Palma is provided.

Key words: *Tarphius palmensis*, new species, Colydiidae, Coleoptera, La Palma, Canary Islands.

RESUMEN: Se describe *Tarphius palmensis* sp. n. de La Palma, Islas Canarias. Se incluyen datos diagnósticos y bionómicos. Se presenta una clave para las cuatro especies conocidas del género *Tarphius* en La Palma.

Palabras clave: *Tarphius palmensis*, especie nueva, Colydiidae, Coleoptera, La Palma, Islas Canarias.

Only three species of *Tarphius* are yet recorded from La Palma viz. *canariensis affinis* Wollaston, *quadratus* Wollaston and *supranubius* Franz. Within the *canariensis*-group there are four different types, two on Tenerife, *erosus* Wollaston and *postcostatus* Uyttenboogaart (1937), one on Gran Canaria, *canariensis* Wollaston and this on La Palma. In his description of *canariensis*, WOLLASTON (1862) has pointed out that the specimens from La Palma were somewhat different from the specimens from Gran Canaria and Tenerife and he therefore named them var. *affinis*. As these differences are constant it may even be justifiable to regard this type on La Palma as a valid species. In his paper ISRAELSON (1980) considers *erosus* as a proper species.

T. supranubius is recently described from a single specimen (FRANZ, 1983). All the species seem to be endemic on the island and this is certainly also the case of the new species.

T. canariensis affinis, *quadratus* and *palmensis* were found in deciduous forest but *supranubius* (10 specimens) was collected by sifting twigs and litter under bushes of *Adenocarpus viscosus* in the mountainous surroundings of Roque de los Muchachos.

***Tarphius palmensis* sp. n.** (Figs. 1, 2)

Type locality: Canary Islands, La Palma, Cubo de la Galga.

Type material: Holotype, ♂, Canary Islands, La Palma, Cubo de la Galga, 12.II.1987, G. Gillerfors, in Dept. of Zoology, Univ. La Laguna, Tenerife.

Paratypes: (3), same data as holotype, in coll. G. Gillerfors, Varberg, Sweden; (3), same data as holotype, A. Törnvall, in coll. A. Törnvall, Gothenburgh, Sweden; (1) same locality but 5.V.1983, J.A. Sánchez, in Dept. of Zoology, Univ. La Laguna, Tenerife.

Diagnosis:

Characterized by rather short and broad, rather depressed surface of elytra with rather strongly developed nodules and ridgelike longitudinal elevation of the 7th striae, and the struc-

ture of aedeagus (Fig.2).

Description:

Length 3.0 - 4.0 mm, width 2.2 - 2.8 mm.

Brown to pitchy-brown, sides of pronotum and margins of elytra lighter. Appendages brown, but tarsi yellowish.

Head. Sides in front of eyes slightly oblique, anterior margin evenly rounded. Surface densely covered with small granules, laterally with small shallow depressions. Eyes small, not protruding. Antennae: segment 2 and 3 subequal, 4 to 6 decreasing in length, 7 to 9 subequal, club rather small.

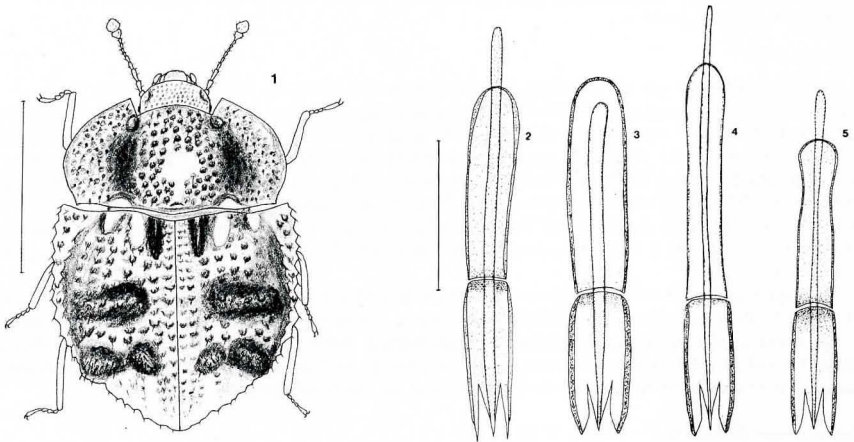
Pronotum conspicuously broader than long, index breadth: length 1.8 - 1.9. Sides more strongly rounded anteriorly than posteriorly, faintly sinuated before hind angles. Greatest width just behind middle, margin rather thick. Explanate lateral portion broad, coarsely punctate and with small rather deep foveas anteriorly and posteriorly at beginning of convex part. Disc in middle with a fairly broad, smooth area extending backwards to near hind margin. Granules on disc somewhat rounded with semi-erect reddish rather than thin setae.

Elytra about 1.64 times as long as pronotum. Base conspicuously broader than base of pronotum. Broader than long, index breadth: length 1.27 - 1.29. Sides strongly jagged, almost straight to middle. Greatest width about middle. Disc rather depressed, mostly with irregular striae. Surface with rather prominent granules with almost erect or semi-erect fairly thin setae.

Orders of nodules: anteriorly an elongate nodule in 3rd interval, in 5th a small one; nodules at middle forming a rather strong transverse elevation from 3rd to 7th interval; posteriorly with two somewhat confluent nodules, one in 3rd and one in 6th to 7th interval. 7th stria forming a ridgelike longitudinal elevation, space between this and lateral margin strongly concave. At base with smooth depressions and subapically with a longitudinal rather broad smooth area between 4th and 5th striae.

Aedeagus as in Fig. 2.

Bionomics: Collected by sifting decaying wood and branches in deciduous forest.



Figs. 1-5: *Tarphius* spp. 1. *T. palmensis* sp.n., habitus; scale: 2.0 mm. 2-5: aedeagus. 2. *T. palmensis* sp.n.- 3. *T. quadratus* Wollaston.- 4. *T. canariensis affinis* Wollaston.- 5. *T. supranubius* Franz; scale: 0.5mm.

KEY TO THE SPECIES OF *Tarphius* ON LA PALMA, CANARY ISLANDS

1. Body elongate 2
- Body squarish 3
2. Elytra with prominent nodules *canariensis affinis* Wollaston
- Elytra without nodules *supranubius* Franz
3. Disc of pronotum with longitudinal depression. Elytra each with a shallow depression
in middle *quadratus* Wollaston
- Disc of pronotum without longitudinal depression, but with a rather broad smooth
area in middle. Nodules prominent. 7th stria of elytra elevated to a ridge
..... *palmensis* sp. n.

ACKNOWLEDGMENTS

My sincere thanks to Mr. A. Törnvall and Prof. P. Oromí who kindly placed specimens at my disposal.

REFERENCES

- FRANZ, H. 1983. Weitere neue Coleopterenarten von den Kanarischen Inseln. *Vieraea*, 13: 75-81.
- ISRAELSON, G. 1980. Taxonomical and nomenclatural notes on some Canarian Coleoptera. *Vieraea*, 9: 183-209.
- UYTTENBOOGAART, D.L. 1937. Contribution to the knowledge of the Fauna of the Canary Islands XIX. *Tijdschr.Ent.*, 80: 75-118.
- WOLLASTON, T.V. 1860-62. Notes on *Tarphii* with description of an allied Genus. *Journ.Ent.*, 1: 371-387.